



# North Central Washington Quilt Guild Newsletter

Vol. XXIII No. 2 P. O. Box 2715, Wenatchee, WA 98807

April 2008

## PRESIDENT'S CORNER

Dear Guild Members:

There is so much to share in this issue of the newsletter. There are many exciting things going on for the guild. The **April 30th** meeting will be held at the North Central Regional Library building on 16 N. Columbia Street across from the Applewood Grill. The Library Dragon Quilt has been hung in the foyer. The Guild membership was invited (thanks, Jill) to hold our meeting there so all could see the quilt. There is an elevator for anyone unable to navigate the stairs.

Please remember dues are now \$20.00. If you paid \$10.00 please drop another check in the mail for the balance or pay at the next meeting. The quilt show committee is working diligently to organize the show. They have secured a new venue (thanks, Patty and Sandy) this year. Read their update. Please join us for the Sun Mountain Guild Retreat. Last year a good time was had by all that attended. Louise Mertes took us on a hike around the hill adjacent to the Lodge. We visited, drank tea, and sometimes even sewed. A great opportunity to get started on the Quilt Show projects.

Have you visited the quilt guild website? [www.NCQuiltGuild.org](http://www.NCQuiltGuild.org)  
See you April 30th.

Piecefully,  
Judy Preston

Quote of the Quarter:  
**As ye Sew, sew Shall Ye Rip**

### **NCW Quilt Guild Meetings**

*Please Note Meeting Change for April only*

**North Central Regional Library**  
16 North Columbia, 7:00 P.M.

**April 30th:** Photos on Quilts by Kathy Storrs

**WVMC Sleep Center**  
1000 N. Miller, Wenatchee  
7:00 P.M.

**May 28th:** New member recognition night, and fat quarter bingo. Everyone bring a fat quarter to get into the game. Bring cookies if you can.

**June 25th:** Swap Meet. Time to clean out the sewing room. Bring fabric, notions and patterns to give away, and take home other peoples "give aways".

**July:** No Meeting

### **Board Meetings**

Board meetings are held the first Monday of each month at 6:45pm  
At the home of Judy Preston  
Everyone is welcome.

### **Newsletter E-Mail Address:**

**[ncwquiltguild@gmail.com](mailto:ncwquiltguild@gmail.com)**

Please put Newsletter in subject line.

### **Quilt Guild Website Address:**

**[www.ncwquilt.org](http://www.ncwquilt.org)**

### 2008 NCWQG Officers

*President:* Judy Preston - 884-2002  
*Vice Pres:* Geraldine Warner - 663-5624  
*Secretary:* Wilma Delp - 884-8150  
*Treasurer:* Terry Murphy - 884-2676  
*Past President:* Patty Stith - 884-8819

### Committee Chairs

*Comfort Quilts:* Chris Dugan - 884-8220  
Kathryn Hemsted - 664-1260  
*Historian:* **open**  
*Librarian:* unavailable, in the process of reorganization  
*Name Tags:* Geraldine Warner - 663-5624  
*Newsletter Editor:* **open**  
*Parliamentarian:* **open**  
*Programs:* Doni Palmgren - 662-7777  
Lori Kutch - 662-2991  
*Quilt Show:* 2008- Sandy Ashbrook - 886-8146  
Co-chair (2009 chair): Patty Stith - 884-8819  
*Block of the Month:* Jan Hashberger - 886-3829  
*Retreat:* Ann Koch - 663-2950  
Susan McWilliams - 662-3342  
*Round Robins:* Ann Koch - 663-2950  
*Sunshine:* Dianne Gillin - 664-5295  
*Web Site:* Jody Leonard - 670-7176  
*Workshops:* Brooke Thomsen - 663-6463

**If there is a committee you would like to be on or chair, contact Judy Preston, 884-2002.**

### 2008 Quilt Show Committees and Chairs

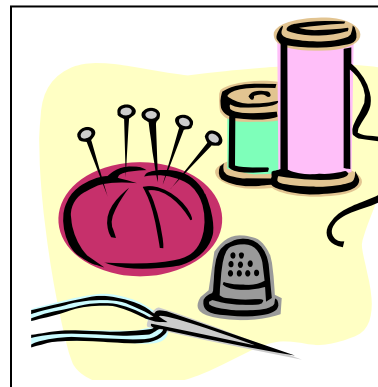
Admissions: Terry Murphy  
Ann Koch  
Advertising: Alycia Jacobsen  
Awards: Sew Classy Round Robin  
Ballot Counting: Tamara Dezellem  
Boutique: **Vacant Co-chairs Needed**  
CD/Slide Show: Sherry Krebs  
Challenge 2008: Kathryn Hemsted  
Challenge 2009: Marla Madson  
Frames Transport: Tara Pitton  
Labels: Patty Stith  
Linda Reisterer  
Layout: Lynn Pittsinger  
Jill Therriault  
Live Demonstrations: Cindy Rowe  
**Assistant Needed**  
Merchant Mall: Jean Aksdal,  
Jan Hashberger  
Photographer: Hilda Goetzinger  
Claudia Olson  
Programs: Patty Stith  
Linda Reisterer  
Props: **Vacant**  
Publicity: Alycia Jacobsen  
Quilt Facilitator/Set up: Deanna Navonne  
Raffle Quilt 2008 Display: Jane Wheeler  
Raffle Quilt 2009: Patty Stith  
Raffle Quilt Tickets: Barb Vincent  
Set-Up: Donald Larsen  
**Needs Assistant**  
Silent Demonstrations: Gloria Palmer  
Take Down: Marla Madson  
Joyce Fischer  
Take In: Valerie Valaas  
White Glove: Jan Hashberger

**If there is a committee you would like to be on or chair, in 2008 contact Sandy Ashbrook, 886-8146**

## Membership Dues

*Dues for the current year shall be paid at or before the January meeting or upon entry into the Guild for that calendar year. Individuals who have not paid the current year's dues by March 31st will be dropped from membership.*

Membership dues are \$20.00. Make checks payable to NCWQG. Mail to **NCWQG, PO Box 2715, Wenatchee, WA 98807**. Pickup your membership card at the meeting or include a SASE if you wish to have your card mailed to you. Membership supports our guild and makes you eligible for Quilt Guild events and to receive our quarterly newsletter. **Please let us know if there is change in your address or phone number. Newsletters are sent bulk mail and are NOT FORWARDED.**



**Please remember to wear your nametag to the Guild meetings.**

# Quilt Show News

## Quilt Show Location Change

Our 2008 show will be located at the Greater Wenatchee Regional Event Center (aka Arena). Our show dates will be October 10th & 11th.

The quilt show is progressing right along. Our vendor booths are filling rapidly. So if you are a vendor and want a spot call Jean Akdsal at 663-1993 right away as spaces are on a first come, first serve basis.

We still have a couple of chair positions open, props & boutique. It is essential that someone volunteers for the boutique soon!! The work load has been minimized, as we have plenty of room in our storage for all the donated items and before the show we will have a sort & price day at the Alcoa Union Hall. In the mean time while you are sorting your things for donation to the boutique call me, Sandy, and I will see that your things get to storage. Please only quilting and sewing items.

Raffle tickets are now available. Call Barbara Vincent at 662-2620 for your tickets. Our awesome quilt will soon be finished and photos will be available by our April Guild meeting.

Remember that we have more expenses this year and we need EVERYONES help to make this a great show!!!

Sandy Ashbrook & Patty Stith  
886-8146 884-8819

## Quilt Show Awards

It's time again to think about making those cute little awards that we put on the winning quilts at our quilt show. We are asking for anyone and everyone to make them for us. We need close to 60 awards for each show. Finished size should be 3" to 4" square. They can be paper pieced, appliquéd, embroidered, crazy quilted or anything else. We will happily accept one award or 30, whatever you can make for us. Thankfully a couple of members have already started working on these little quilts. We appreciate any help.

Any questions please contact Doni Palmgren, [donipalmgren@charter.net](mailto:donipalmgren@charter.net), ph 662-7777 or any member of Sew Classy Round Robin.

## 2008 Quilt Show Challenge

Fat quarters are still available for \$3 each for the 2008 Quilt Show Challenge fabric. The theme is "Apple Capital of the World". The idea is to take the fat quarter and incorporate it into something you make, whether it be a quilt, pot holder, vest or where ever your imagination takes you. Enter it in the quilt show and the general public will vote on their favorite entry. This is a fund raiser for the quilt show. You are under no obligation to make something once you have purchased the fabric. I will have the fabric at each Guild meeting until they are all gone!

Kathryn Hemstead

## Round Robins

If you are a guild member but not in a Round Robin (small quilting group) and would like to join one, contact Ann Koch, 663-2950.

## Retreats

The fall retreat will again be at Campbell's Resort  
November 14th, 15th, & 16th.  
Sign up sheet will be at the meetings.

For more information contact:  
Ann Koch, 663-2950  
Susan McWilliams, 662-3342

## Sunshine News

Those who were sent cards of sympathy, get well, etc. in this quarter were: LaVanche Rhodes, Tanner Perry family, Kathleen Schmidt, Jesslyn Winter, Donna Goette, Doris Stadler, Risa Coldwell, Judy Nadeau-Zerr, Yvonne Rodes and Tara Pitton

Please feel free to call or email me with your requests and concerns at 664-5295, or [diannegillin@gmail.com](mailto:diannegillin@gmail.com).  
Dianne

### Quilts of Valor Community Sew Days

**When: Second Saturday of every Month**

**10 am to 5 pm**

**Where: Chelan County PUD Auditorium  
(Fifth Wenatchee Ave in Wenatchee)**

**What to Bring:** Sewing machines and supplies, current QOV projects, fabric and patterns, inspiration and enthusiasm! Our goal this year is 100 quilts from the Wenatchee Valley and surrounding areas. We plan to hold these sew days monthly as a way to make quilts, and share information. Any one interested is invited to join us. We will have information sheets and patterns designed specially for Quilts of Valor at the sew days.

If you have any questions about the Quilts of Valor Foundation, or our local projects, please call or email either Lori at 662-2991 [lorilovesred@charter.net](mailto:lorilovesred@charter.net), or Debby at 662-4149 [daphillips@nwi.net](mailto:daphillips@nwi.net). Or check the website at [www.qovf.org](http://www.qovf.org)

Thanks and hope to see you at the Sew Day!  
Debby and Lori  
NCW Quilts of Valor

## Rotary Cutting Workshop with Peggy Schafer

Peggy Schafer is the co-developer and former co-owner of Omnigrid, Inc., maker of quilting and craft rulers. She has been conducting classes and seminars demonstrating rotary cutting techniques for over 20 years. She has taught both nationally and internationally.

Sponsored by NCW Quilt Guild

\$15 for quilt guild members

For more information contact:

Brooke Thomsen 663-6463 or Terry Hunter 884-5662  
or e-mail [quiltaddicts@verizon.net](mailto:quiltaddicts@verizon.net) to register

**Friday, May 30th 1- 4pm**

or

**Saturday, May 31st 8:30 -11:30am**

or

**Saturday, May 31st 1- 4pm**

WVMC Sleep Center, 1000 N Miller

***Next Newsletter deadline August 1st, mail date August 15th.***

# Friendship Quilts

## Suggest Quilt Sizes:

**Crib Quilt:** Mattress 27 x 52  
Quilt @ 42 x 54 (width of fabric)  
Age appropriate fabric up to @ age 31/2

**Youth Quilt:** @ 50 x 65  
Age appropriate fabric up to age 10

**Couch Throw:** @ 60 x 72

**Twin Quilt:** Mattress 39 x 75  
Quilt @ 65 x 95

**Double Bed Quilt:** mattress 54 x 75  
Quilt @ 80 x 95

**Queen Bed Quilt:** mattress 60 x 80  
Quilt @ 86 x 100

## Quilt Tops

If you have a completed quilt top that needs a good home we can finish it and add it to our Comfort Quilts. The top needs to be finished, (please no blocks to finish or borders to be put on). We have backing and batting and we can get it quilted and bound. Please remember the batting and wide backing we have stored at Lynn Pittsinger is for your use when you are working on Comfort Quilts.

## Finished Quilts

We can always find a loving home for a completed quilt you donate. Do you have a quilt you completed in a class or at a retreat or a pattern you couldn't resist? If you have quilts you no longer love we can find a loving home for them through our Comfort Quilt Program. Let Chris or Kathryn know.

**We have a shortage of Masculine quilts**

## A BIG Thank You

Diane and Marilyn, at the Attic Window Quilt Shoppe, have been letting us use their long arm machine to quilt the tops you have donated for Comfort Quilts. We have been using their machine during down times to learn how to use the machine and at the same time get the quilts ready for binding. What a wonderful donation to the Quilt Guild.

Thank You.  
Chris Dugan  
Comfort Quilt Chairperson

## Round Robin Challenge

I hope your group is making plans to enter the 3<sup>rd</sup> annual Round Robin Quilt Challenge. Quilts will be presented at the August meeting and we will vote at that time. The winning round robin will have the privilege of being first in line at the November potluck. We hope all your groups participate. The challenge is a good way for us to replenish our supply of Comfort Quilts. Thanks for your help.

**Notice:** The guild has a roll of batting and some extra wide backing in a tan print and white on white. If you need some for a Friendship Quilt project, please call Lynn Pittsinger, 662-6715 with measurements and it will be cut to the size of your project. You can pick it up or Lynn can deliver.

## Donated Comfort Quilts

We have been busy giving your quilts to people in need.

### Quilts donated for comfort:

- \* Chris Parker. Chris is a senior at Wenatchee High school being treated for leukemia.
- \* Mario Guzman, a senior from Quincy High school with Leukemia.
- \* Marcy Hegberg, a Kindergarten teacher at Mission View, fighting lymphoma
- \* Tricia Hopkins, a teacher at Wenatchee High school, was diagnosed with malignant melanoma in 2007.
- \* Rainy Day Quilt Guild of Southwest Washington. We donated 4 quilts for people in the Chehalis area that lost their home in the floods.

### Quilts Donated for Fund Raisers:

- \* Medical expenses for Fred Bull who is fighting Brain Cancer.
- \* Mobile Meals Raffle. Money raised will help pay for food delivered to people who can not afford to pay.
- \* Wenatchee World employees are having a Relay for Life fund raiser and will raffle the quilt and donate the money raised to cancer research.
- \*The annual State Long Term Care Ombudsman National TraininConference-2008. The program is intended to improve the quality of life for people living in long term care facilities.

## Thank You to North Central Washington Quilt Guild Members

Dear Quilt Guild Members,

A note of appreciation goes to the generous guild members that frantically assembled materials, fabrics, batting, orphan blocks, award winning quilt tops and quilts. Lewis County was devastated by the flood in early December, where 250 families were displaced. We are blessed to be surrounded by such talented and giving people. Your gifts not only provided practical support, but also represents care and concern for families in need. We are confident these quilts will be treasured by those who receive them.

Gratefully,  
Octavia Weiher, Daughter of Verna Winsor

Received 1-20-2008

## Message Center

### Appliqué Club

Meets at the Attic Window Quilt Shop from 3:00 – 6:00 pm the last Friday of each month. Bring project of your choice.

### Singer Featherweight Machines for Sale

I have 2 - #221 Featherweight sewing machines for sale. Both in top condition with case and 2 keys, plus lots of Bobbins and attachments. One is a 1941 and the other 1948. \$400 each OBO. Jill Therriault 670-5318



## Hand and Machine Quilting

**“Changing Views” Machine Quilting.** Located at 1301 Ormiston St. Wenatchee. Call Jill Therriault at 663-9165 for appointment and price list.

**Ewok’s Eversharp,** Call John Davies (509) 886-4645 to sharpen scissors, knives, tools.

**Longarm Ken’s Machine Quilting:** PO Box 182, Malott, WA 98829 (509) 422-1646, cell 322-3680 e-mail [kenjoy@bmi.net](mailto:kenjoy@bmi.net)

**Machine Quilting - “Jodi’s Quilt & Things”.** Call Jodi Duncan at 886-1055 for more information.

**My Quilting Room” Quality Hand Quilting.** Call Louise McCallister – Phone (509) 687-3412, 994 W Manson Blvd, Manson.

**Nancy’s Custom Quilting and Longarm Rental** – Nancy Freese 509-548-2183

Two Gammill Optimum Plus machines for rental, call for rental fee and machine availability. Also available, custom quilting with reasonable rates and return time. Local drop off spot at Wenatchee Sewing and Vacuum. Thank you NCW quilters for your continued support, keep up the awesome quilting!

**Patchwork Etc. machine quilting** Pat Lannoye 662-7349

**Sandy’s Machine Quilting, etc.** – 201 N Nile, East Wenatchee. Call Sandy Ashbrook at 886-8146.

**Sharpen your scissors at Johnny’s Custom Knifemakers,** 15 S Lombard Avenue in East Wenatchee. Phone – 884-6591.

**Sweet Sage Machine Quilting** – 775 N Keller, E Wenatchee - Call Linda Boatright - 884-5520.

**Traditional Hand Quilting:** Marie Sisson, P.O. Box 1732, Chelan, WA 98816 PH: (509) 682-5691 *25 Years Experience*

## Local Area Sewing Shops

Many of our local quilt shops are very generous to our guild.  
Please support them and let them know that their efforts are appreciated.

**Columbia Basin Quiltworks & Bernina,** 122 West 3rd Avenue, Moses Lake, WA 98837 (509) 764-2238 Open Monday-Friday  
10:00am-5:30pm Saturday 10:00am - 5:00 pm [www.cbquiltworks.com](http://www.cbquiltworks.com)

**Craft Warehouse,** Valley North Mall, Wenatchee, 509-663-9559.

10% discount for Guild members on fabric, books, pattern, and notions. *Please have your membership card with you.*

**Dee’s Country Accents,** 917 Commercial St., Leavenworth, WA. 98826, 548-5311 or 1-800-253-8990 [www.quiltersheaven.com](http://www.quiltersheaven.com), E-mail [info@quiltersheaven.com](mailto:info@quiltersheaven.com) *We are excited about all the activities and events coming your way and are free to attend.*

QUILT SOIREE: Will be on the first Tuesday of every month from 1:00 P. M. to 3:00 P. M.

FAST FRIENDS GET-TOGETHER: Will be on the third Sunday of every month from 2:00 P.M. to 4:00 P.M. Threads and Hands Stitch Together: Meet every Monday from 2 P.M. to 4 P.M. Girlfriends Quilting Bee: Meet every Wednesday at 6 P.M. to 8 P.M.

All activities and events will meet at Dee’s Country Accents

**Sew Creative,** 1139 N. Princeton (behind JC Penney) 509-663-5516. [SewVacShop@aol.com](mailto:SewVacShop@aol.com).

**The Attic Window Quilt Shoppe,** 1630 N. Wenatchee Ave. Suite 8, Wenatchee, WA 98801 - (509) 888-2006, E-mail: [atticwindow@nwi.net](mailto:atticwindow@nwi.net) Hours: Mon-Thurs 9:30-6:00, Fri 9:30-5:30, Sat 10:00-5:00, Sun 12:00-4:00

**The Fabric Patch,** 220 Tenth Avenue, Ephrata - 509-754-8280 Call or stop in – or see [www.fabricpatch.net](http://www.fabricpatch.net).

**Wenatchee Sewing & Vacuum,** 1544 North Wenatchee Ave. #300 (formerly JC’s Stitching Post). 509-662-8627  
E-Mail: [wensewinc@aol.com](mailto:wensewinc@aol.com). We have a larger classroom area and are carrying more fabric.

**Woven Threads,** 136 E. Woodin Ave. - 509-682-7714 or email us at [info@woventhreads.com](mailto:info@woventhreads.com) Hours: Mon- Saturday: 9:30-5:30pm  
Happy Stitching! Rosie

What to Bring - Sewing machines and supplies, current QOV projects, fabric and patterns, inspiration and enthusiasm!

Our goal this year is 100 quilts from the Wenatchee Valley and surrounding areas. We plan to hold these sew days monthly as a way to make quilts, and share information. Any one interested is invited to join us. We will have information sheets and patterns designed specially for Quilts of Valor at the sew days.

If you have any questions about the Quilts of Valor Foundation, or our local projects, please call or email either Lori at 662-2991 lorilovesred@charter.net, or Debby at 662-4149 daphillips@nwi.net. Or check the website at [www.qovf.org](http://www.qovf.org)

Thanks and hope to see you at the Sew Day!  
Debby and Lori  
NCW Quilts of Valor

\* \* \* \* \*

### Quilter's Newsletter's Ways to Improve your Quilting continued

- \* Measure your pieced units from time to time during the project to be certain they are the correct size plus seam allowance.
- \* Before starting a project, test your marking tool of choice of your fabrics to be certain it will wash or rub out.
- \* If you are using several colors of thread on a project keep a needle threaded with each color to save the trouble of rethreading.
- \* For easy thread cutting, place a slender seam ripper in the hole of the spool of thread and clip lengths with a simple tug over. A piece of tape on the bottom hole will prevent the ripper from slipping through.
- \* Check the back of your quilt from time to time to be certain your quilting stitches are getting through all of the layers.
- \* When you need to take out a few hand quilting stitches, use a fine, steel crochet hook. The rounded tip removes the stitches easily without catching threads of the fabric.
- \* If, after removing stitches, you find a row of little holes left in the fabric, dampen a cotton swab with warm water and rub it gently over the holes to make them disappear.
- \* Arrange the surface of your sewing machine so it is level with the surface of the sewing table you are using. This will make the quilt easier to move around and through the machine.
- \* Use furniture polish on your work surface to make it slippery. This too helps your quilt glide easily during machine quilting.
- \* Arrange other tables around your sewing machine so the quilt will be supported while you quilt. This avoids "drag" on the quilt that can pull it in the wrong direction.
- \* Use rubber finger cots, cotton gloves or coat your fingertips with rubber cement when machine quilting. This will make it easier to move your quilt around the machine.
- \* Putting a busy print fabric on the back of your quilt will help to hide those rare imperfect stitches.
- \* Be creative with the back of your quilt. Make it from leftover fabrics or blocks, use soft flannel for a lap or bed quilt, or piece your label into the block.
- \* To get an interesting quilting design without marking, use a print fabric on the back of the quilt and stitch from the back, following the design of the fabric.

# North Central Washington Quilt Guild

P.O. Box 2715

Wenatchee, WA 98807-2715

PRSTD STD  
U.S. POSTAGE  
**PAID**  
PERMIT NO 1  
WENATCHEE, WA

**Next Newsletter Deadline  
August 1, 2008**

## Your Attention Please

### April Meeting

**Our April 30th meeting will be held at the North Central Regional Library, at 7:00pm. Parking is available across the street and an elevator is available. This will give all of us an opportunity to view Sheila Englert's winning quilt. Shelia won the North Central Regional Library Quilt Contest. She based her quilt design on the story "The Library Dragon". The library will serve cake.**

### *Reminder*

*We have been asked by the Sleep Center to leave six parking spaces close to the building available for Sleep Study participants. They arrive after we start our meeting, and are having to park out across the lot. The spaces they want left open are the two facing each other, closest to the building, on each of the three double parking rows. Thank you.*

We have been asked by the Sleep Center to leave six parking spaces close to the building available for Sleep Study participants. They arrive after we start our meeting, and are having to park out across the lot. The spaces they want left open are the two facing each other, closest to the building, on each of the three double parking rows. Thank you.

We have been asked by the Sleep Center to leave six parking spaces close to the building available for Sleep Study participants. They arrive after we start our meeting, and are having to park out across the lot. The spaces they want left open are the two facing each other